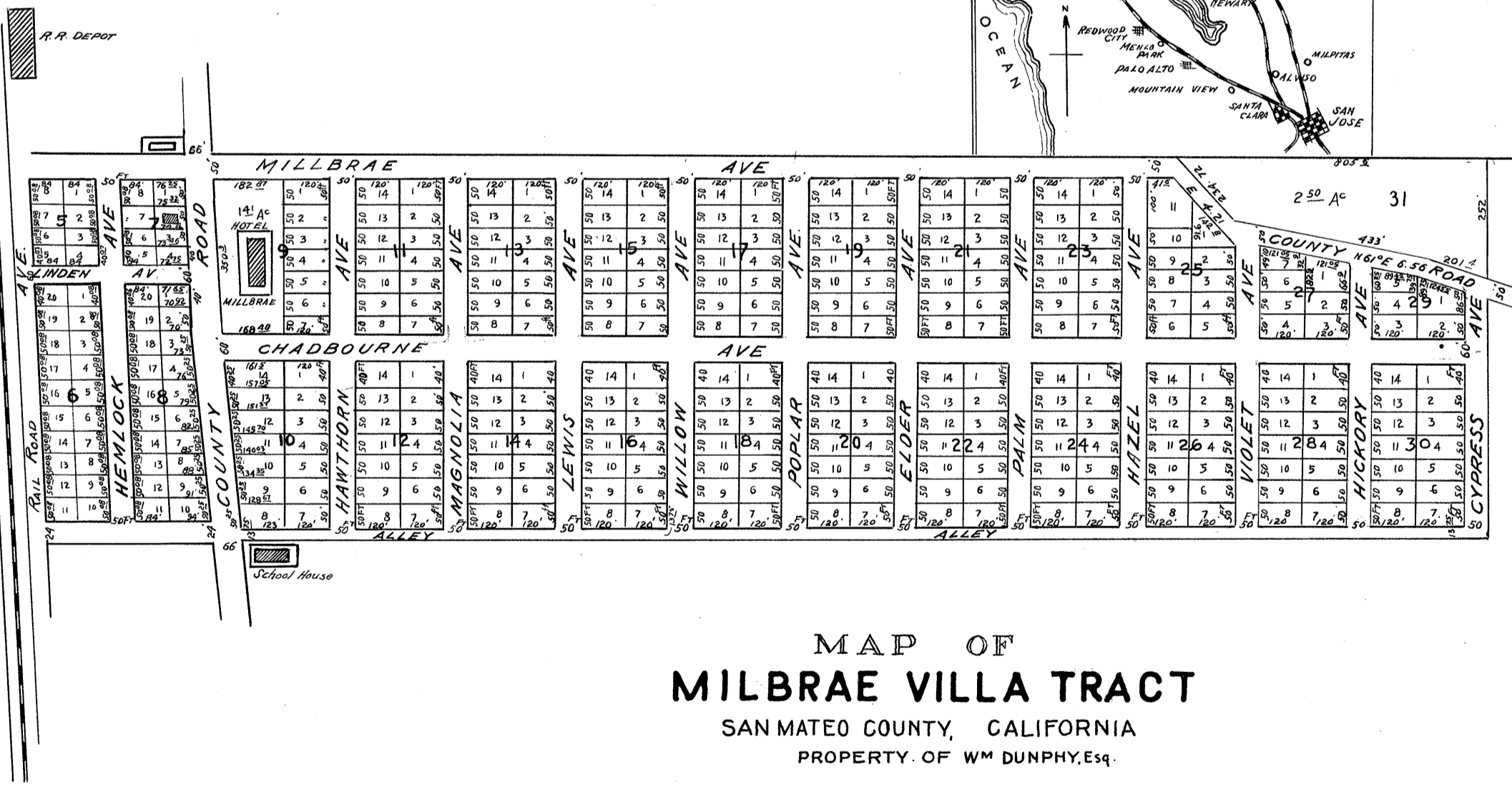


Bay of San Francisco

**NOTE:-- FOR DECREE of ABANDONMENT of PORTIONS
 HEREOF See Vol. 548 O.R. Page 166.**

J. C. R.
 County Recorder.

FILED AT THE REQUEST OF DAN'L O'CONNEL APRIL 5TH A.D. 1889
 AT 45 MIN. PAST 8 O'CLOCK A.M.
 J.F. JOHNSTON, Recorder
 By E. Eikerenkotter, Deputy

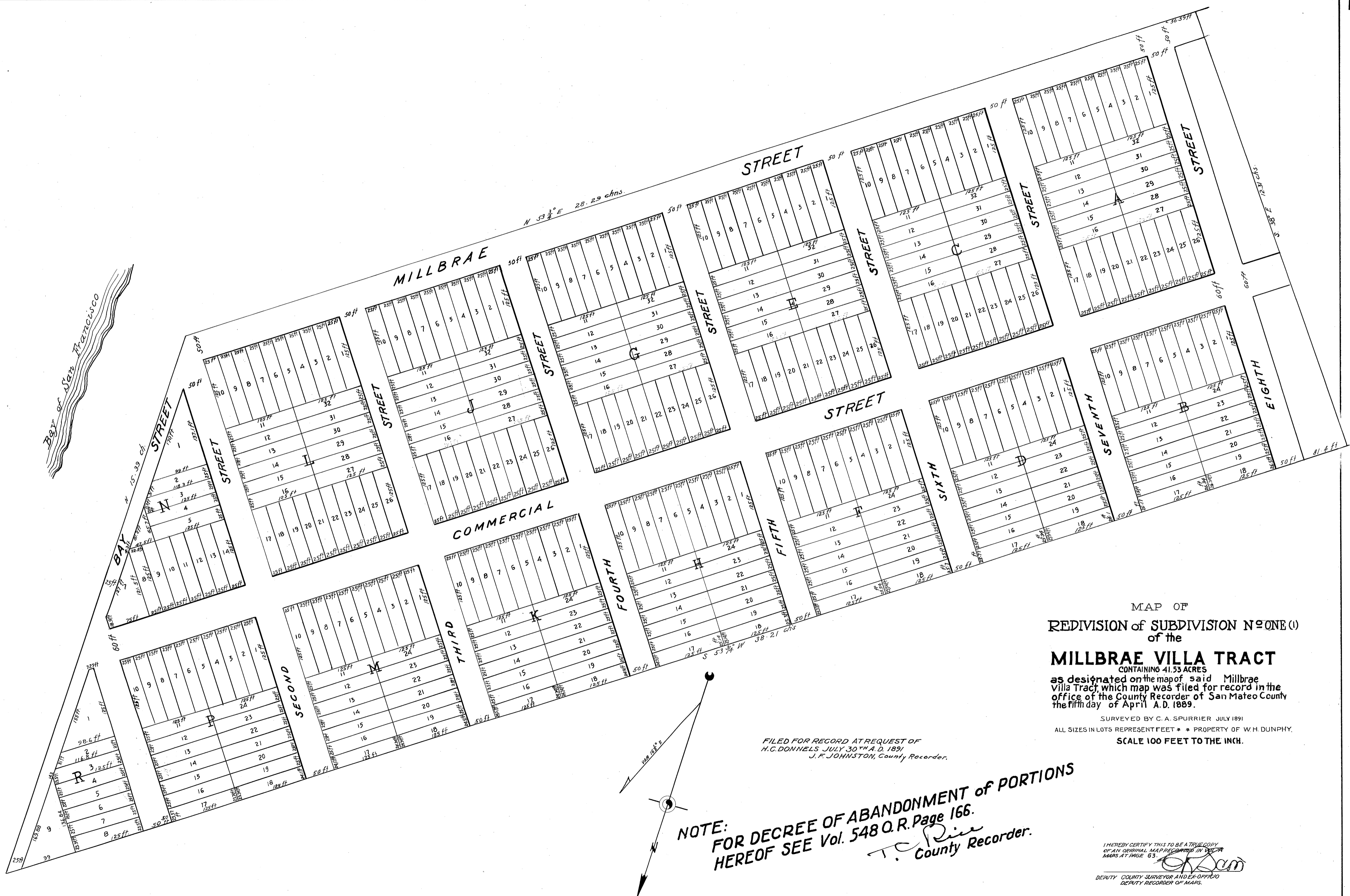
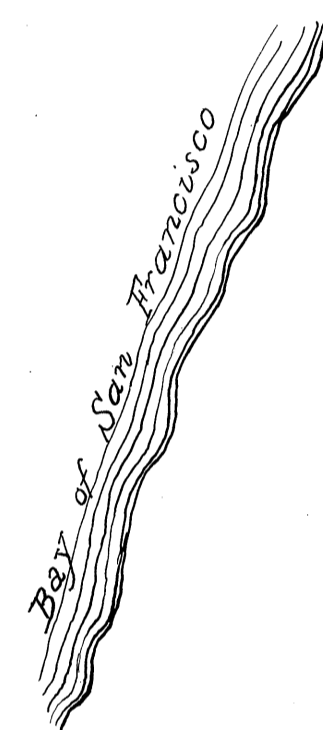


**MAP OF
 MILBRAE VILLA TRACT**
 SAN MATEO COUNTY, CALIFORNIA
 PROPERTY OF WM DUNPHY, Esq.
 SURVEYED BY C. A. SPURRIER
 FEBRUARY 1889

ALL SIZES IN LOTS REPRESENT FEET

I HEREBY CERTIFY THIS TO BE A TRUE COPY
 OF AN ORIGINAL MAP RECORDED IN BOOK B
 MAPS AT PAGE 36

C. A. Spurrer
 DEPUTY COUNTY SURVEYOR AND EX-OFFICIO
 DEPUTY RECORDER OF MAPS.



MAP OF
REDIVISION of SUBDIVISION NO ONE (1)
of the

MILLBRAE VILLA TRACT
CONTAINING 41.53 ACRES
as designated on the map of said Millbrae
Villa Tract which map was filed for record in the
office of the County Recorder of San Mateo County
the fifth day of April A.D. 1889.

SURVEYED BY C. A. SPURRIER JULY 1891
ALL SIZES IN LOTS REPRESENT FEET * * PROPERTY OF W. H. DUNPHY.
SCALE 100 FEET TO THE INCH.

FILED FOR RECORD AT REQUEST OF
H.C. DONNELLS JULY 30th A. D. 1891
J. F. JOHNSTON, County Recorder.

NOTE:
FOR DECREE OF ABANDONMENT of PORTIONS
HEREOF SEE Vol. 548 O.R. Page 166.
T. Rice
County Recorder.

I HEREBY CERTIFY THIS TO BE A TRUE COPY
OF AN ORIGINAL MAP RECORDED IN THE
MAPS AT PAGE 63.
DEPUTY COUNTY SURVEYOR AND EX-OFFICIO
DEPUTY RECORDER OF MAPS.