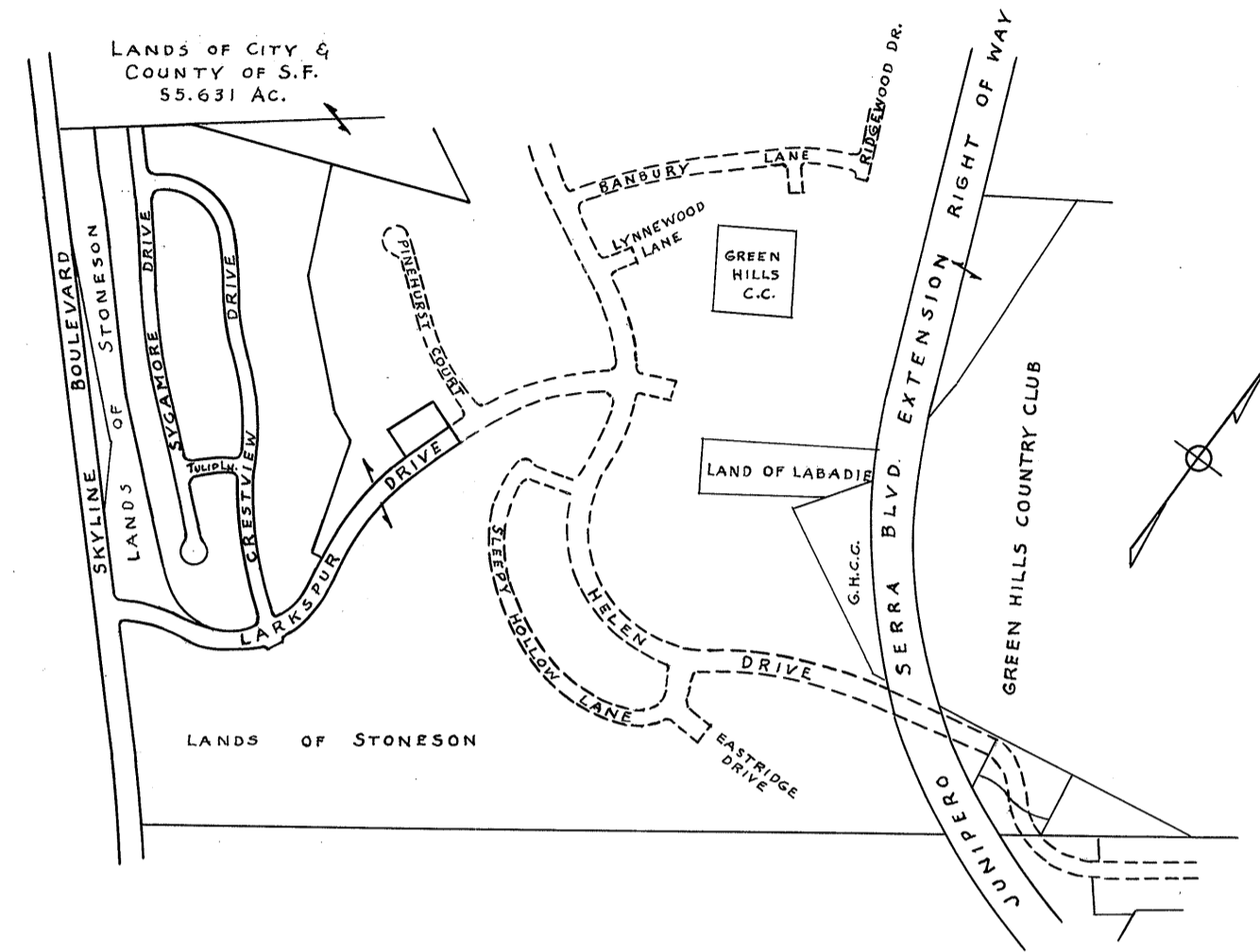


# MILLBRAE MEADOWS NO. 2 MILLBRAE

SAN MATEO COUNTY CALIFORNIA  
SCALE 1"=100 FEBRUARY, 1956  
EARL P. WILSEY CIVIL ENGINEER



VICINITY MAP  
SCALE: 1"=600'

### ENGINEER'S CERTIFICATE

I, Earl P. Wilsey, a Registered Civil Engineer of the State of California, hereby certify that this map correctly represents a survey made under my direction during the months of Sept. and Oct. 1954; that the survey is true and complete as shown; that the monuments are of the character and occupy the positions indicated or will be set in such positions, and are sufficient to enable the survey to be retraced.

Dated April 16<sup>th</sup> 1956

*Earl P. Wilsey*  
Registered Civil Engineer of the State of California Reg. No. 541

### CITY ENGINEER'S CERTIFICATE

I, Lee E. Ham, City Engineer of the City of Millbrae, State of California, hereby certify that I have examined this map; that the subdivision as shown hereon is substantially the same as it appeared on the tentative map and any approved alterations thereof as approved by the MILLBRAE PLANNING COMMISSION on Nov. 14 1955, that all provisions of the California "Subdivision Map Act," as amended, have been complied with and that I am satisfied that this map is technically correct.

Dated May 8 1956

*Lee E. Ham*  
Lee E. Ham - City Engineer - City of Millbrae - State of California

### CITY CLERK'S CERTIFICATE

I, Isobel Smart, City Clerk of the City of Millbrae, State of California, hereby certify that the City Council of said City, at its regular meeting held on the 20 day of December 1955 duly approved the within map and accepted on behalf of the public, all parcels of land offered for dedication for public use in conformity with the terms of the offer of dedication.

Dated March 2, 1956

*Isobel Smart*  
City Clerk of the City of Millbrae State of California

### BASIS OF BEARINGS NOTE

The bearing of the center-line of the State Highway District IV Rt. 55 Sect. A, known as "Skyline Boulevard," between Engineers Stations "A" 498+14.64 and "A" 519+57.79 P.O.T. bearing S42°41'E was taken as the basis of bearings shown on this map.

All distances and dimensions are shown in feet and decimals thereof.

The blue border indicates the boundaries of the land subdivided by this map.

⊙ Indicates Iron Pipe Monument

### DEED REFERENCE

This map is a subdivision of a portion of the lands conveyed by the HIGHLAND BUILDERS, INC., to THE STONESON DEVELOPMENT CORPORATION by deed dated April 10<sup>th</sup> 1953 and recorded in Book 2401 at page 463, Official Records of San Mateo County, California.

### OWNER'S CERTIFICATE

We hereby certify that we are the owners of, or have some right, title, or interest in and to the real property included within the subdivision as shown upon this map, and that we are the only persons whose consent is necessary to pass a clear title to said property, and we consent to the making of said map and subdivision as shown within the colored border lines, and hereby dedicate to public use all streets as shown on said map within said subdivision.

We also hereby dedicate to public use easements for public utilities designated as "P.U.E." and anchor easements designated as "A.E." and Drainage Easement such easements to be kept free and clear of buildings and structures of any kind.

THE STONESON DEVELOPMENT CORPORATION  
a corporation

By *H. Stoneson* PRESIDENT As OWNERS  
By *E. B. Stewart* SECRETARY

### ACKNOWLEDGEMENT

STATE OF CALIFORNIA } s.s.  
CITY & COUNTY OF SAN FRANCISCO }

On this 21<sup>th</sup> day of FEBRUARY 1956, before me ARTHUR E. SCHUMACHER a Notary Public in and for said City & County of San Francisco State of California residing therein duly commissioned and sworn personally appeared H. STONESON and E. B. STEWART known to me to be the President and Secretary respectively of the STONESON DEVELOPMENT CORPORATION, a corporation and the Corporation that executed the within and foregoing instrument and also known to me to be the persons who executed it on behalf of the corporation therein named and they acknowledged to me that said corporation executed the same.

IN WITNESS WHEREOF, I have hereunto set my hand and affixed my Official Seal the day and year in this certificate first above written.

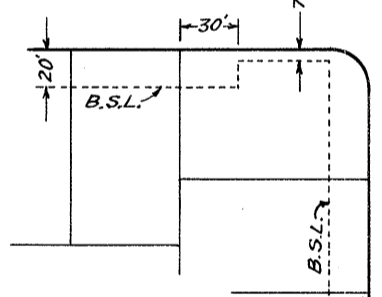
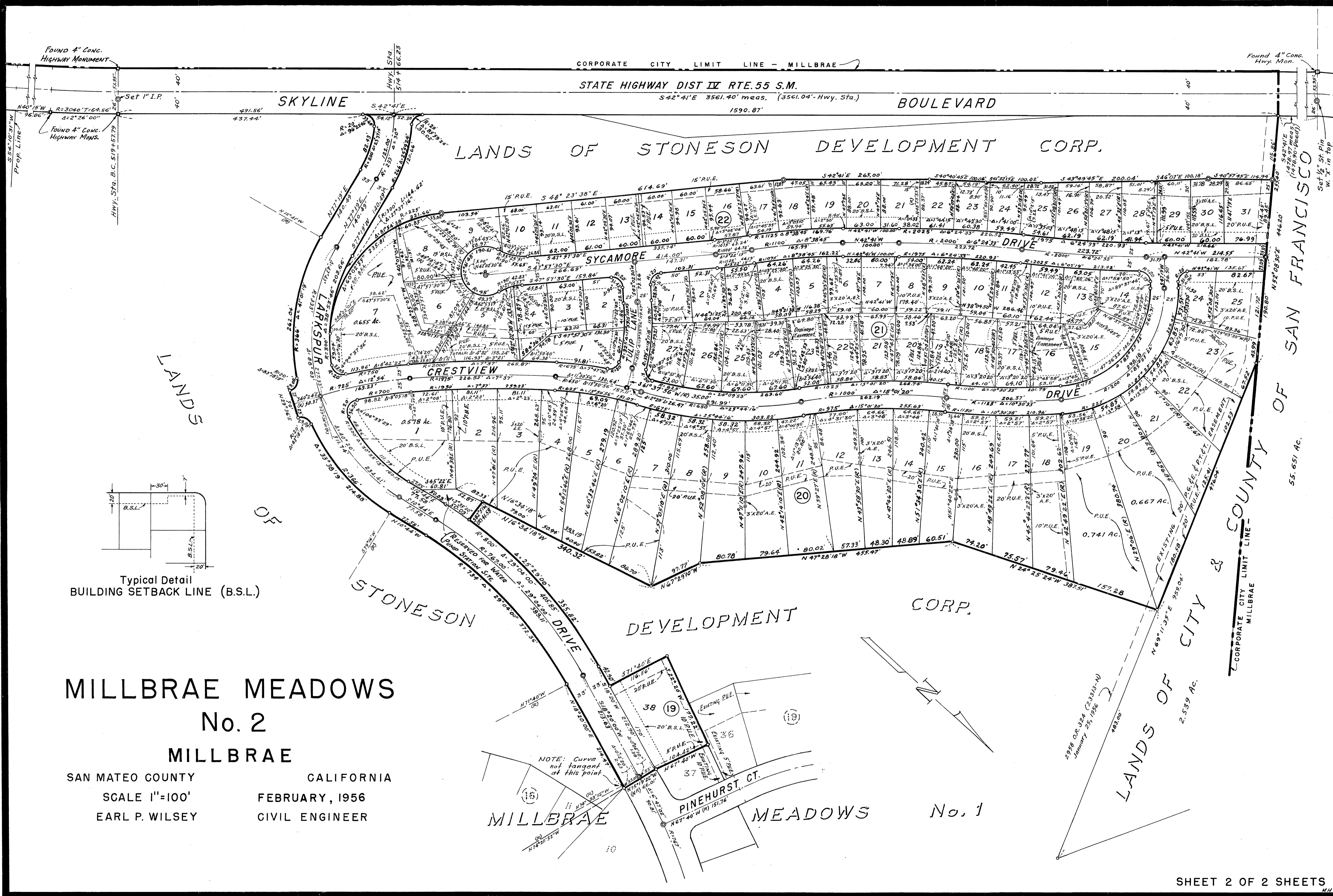
My Commission Expires FEB. 16, 1958

*Arthur E. Schumacher*  
Notary Public in and for the City & County of San Francisco State of California

### COUNTY RECORDER

File No. 54561N  
Accepted for record and recorded at the request of California Pacific Title Insurance Co. in Book 45 of Maps at pages 16 & 17 in the office of the County Recorder of the County of San Mateo, State of California, this 16<sup>th</sup> day of MAY 1956 at 09 minutes past 4 P.M.

*Ruth Kirste*  
County Recorder, San Mateo County State of California  
By *Eleanor B. Carteaux* Chief Deputy



**MILLBRAE MEADOWS**  
**No. 2**  
**MILLBRAE**  
 SAN MATEO COUNTY CALIFORNIA  
 SCALE 1"=100' FEBRUARY, 1956  
 EARL P. WILSEY CIVIL ENGINEER

NOTE: Curve not tangent at this point