

# MAP OF SUBDIVISION NO. 1. MILLBRAE HIGHLANDS MILLBRAE SAN MATEO COUNTY CALIFORNIA



Wm B. Hoag, Engineer & Surveyor.  
Mar, 1927.

KNOW ALL MEN BY THESE PRESENTS: That BAYSIDE COMPANY, a Corporation, organized and existing under the laws of the State of California, and having its principal place of business in the City and County of San Francisco, State of California, authorizes the Subdivision entitled "Map of Subdivision No. 1, Millbrae Highlands, Millbrae, San Mateo County, California," and hereby consents to the making and filing of this map thereof and declares it to be a true and correct plan of the survey of said subdivision.

That the land designated and designated thereon as El Camino Real, Broadway, Magnolia Ave., Lewis Ave., Willow Ave., Poplar Ave., Elder Ave., Palm Ave., Victoria Ave., La Cruz Ave., Hillcrest Boulevard, Beverly Ave., Taylor Boulevard and 20 foot alley is intended and is hereby offered for dedication as streets and highways for public use.

That the subscriber to this statement is all who is necessary to pass a clear title to the land shown on this map exclusive of the streets now present.

IN WITNESS WHEREOF said BAYSIDE COMPANY has caused these presents to be duly signed by its Vice President and attested by its Secretary under its corporate seal this 4th day of March, A.D. 1927.

BAYSIDE COMPANY, a Corporation.

By Adeline M. Howard Vice President.

Attested Ann T. Medina Secretary.

STATE OF CALIFORNIA  
City and County of San Francisco ) ss.

On this 4th day of March, 1927, in the year one thousand nine hundred and twenty seven before me, William Ralston, a Notary Public in and for the City and County of San Francisco, State of California, residing therein duly commissioned and sworn, personally appeared Adeline M. Howard and Ann T. Medina, known to me to be the Vice President and Secretary, respectively of BAYSIDE COMPANY, the Corporation that executed the within instrument and the officers who executed the within instrument on behalf of the Corporation therein named, and they acknowledged to me that such corporation executed the same.

IN WITNESS WHEREOF I have hereunto set my hand and affixed my official seal, this day and year in this certificate first above written.

Notary Public in and for the City and County of San Francisco, State of California.  
William Ralston

STATE OF CALIFORNIA  
City and County of San Francisco ) ss.

Adeline M. Howard being duly sworn, deposes and says that she is the Vice President of BAYSIDE COMPANY, a Corporation, and makes this affidavit on behalf of and as the act of said Corporation. That the "Map of Subdivision No. 1, Millbrae Highlands, Millbrae, San Mateo County, California," comprises five sheets, viz. Sheets No. 1 and No. 2 embracing the delineation of streets and blocks, Sheets No. 3 and No. 4 embracing the delineation of streets and showing monuments as located, and appearing on the ground and Sheet No. 5 including the endorsements of affidavits, certificates, approvals, consents and certificates of acknowledgments.

That the parties that have hereunto signed their consent are the only parties necessary to the making of this map.

Adeline M. Howard  
Vice President

Subscribed and sworn to before me this 4th day of March, A.D. 1927.

Notary Public in and for the City and County of San Francisco, State of California.  
William Ralston

J. J. Shields, County Auditor of the County of San Mateo, State of California, hereby certifies that there are no liens for unpaid taxes, against the tract of land shown on this map.

IN WITNESS WHEREOF, I have hereunto set my hand this 6th day of April, 1927.

J. J. Shields  
County Auditor

We, Geo. A. Kneese and D. P. Flynn, County Surveyor and County Assessor, respectively, of the County of San Mateo, State of California, do hereby certify that we have examined each and every lot and block shown on this map and that the same is suitable for residential or commercial purposes and we recommend that the Board of Supervisors of the County of San Mateo, State of California, approve this map.

Geo. A. Kneese  
County Surveyor

D. P. Flynn  
County Assessor

We the City Planning Commission of the City of Burlingame, County of San Mateo, State of California, hereby approve the "Map of Subdivision No. 1, Millbrae Highlands, Millbrae, San Mateo County, California."

John W. Fogarty  
Chairman

Frank B. Cole  
Secretary

I, Wm B. Hoag, Civil Engineer of San Francisco, California, do hereby certify that the within map is a full, true and correct survey made on the ground by me of the lands embraced therein.

Wm B. Hoag  
Civil Engineer

STATE OF CALIFORNIA )  
County of San Mateo ) ss.

The within map having been presented to the Board of Supervisors of the County of San Mateo, State of California, on this 4th day of April, 1927, it is hereby ordered by said Board of Supervisors that said map be and the same is hereby approved. It is further ordered that all roads and avenues and alleys offered for dedication on said map be rejected as public highways on behalf of the public, and said Sanitary, sewer and public utility reserves are hereby accepted on behalf of the public.

IN WITNESS WHEREOF I have hereunto set my hand and affixed the official seal of the Board of Supervisors this 4th day of April, 1927.

Elizabeth M. Howard  
Clerk of the Board of Supervisors of the County of San Mateo, State of California.

This is to certify that a bond for the payment of taxes on Map of Subdivision No. 1, Millbrae Highlands, Millbrae, San Mateo County California as required by law has this day been filed and approved by the Board of Supervisors of San Mateo County, California.

Dated: April 4, 1927.

Attest

Elizabeth M. Howard  
Clerk of the Board of Supervisors of the County of San Mateo, State of California.

This map contains 72.45 Acres.

BAYSIDE COMPANY, a Corporation, hereby offer for dedication an easement or right of way for the construction, operation and maintenance of sanitary sewers and other public utilities over all those certain strips of land shown hereon and marked "Reserve Aftwide" and "Reserve B ft. wide."

BAYSIDE COMPANY, a Corporation.

By Adeline M. Howard  
Vice President

By Ann T. Medina  
Secretary

File No. 82352A

Filed for Record at request of Bayside Company April 7th 1927  
at 9 o'clock A.M. in Vol. 15 of Maps at pages 48, 49, 50, 51 & 52,  
San Mateo County Records.

W. P. Rice  
County Recorder.

# MAP OF SUBDIVISION No. 1. MILLBRAE HIGHLANDS MILLBRAE SAN MATEO COUNTY CALIFORNIA

Wm. B. Hoag, Engineer & Surveyor.  
March, 1927.

## SPRING VALLEY WATER CO.

SCALE  
0 100 200 300 400 FT.



MILLBRAE VILLAGE TRACT

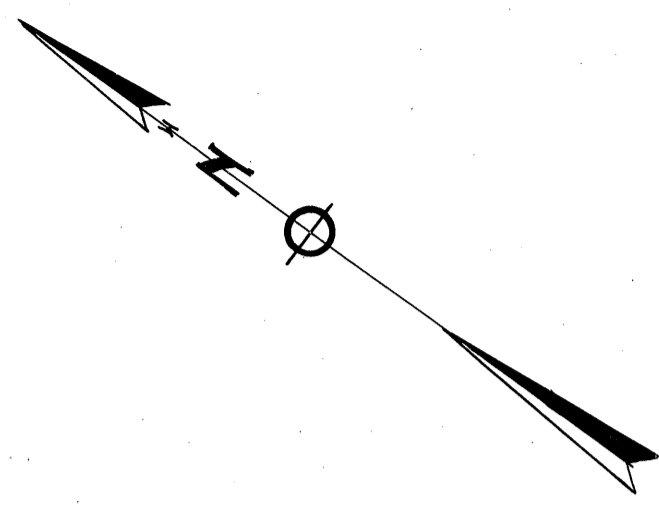
Identical with most western cor. of Block 10, Millbrae Villa Tract.



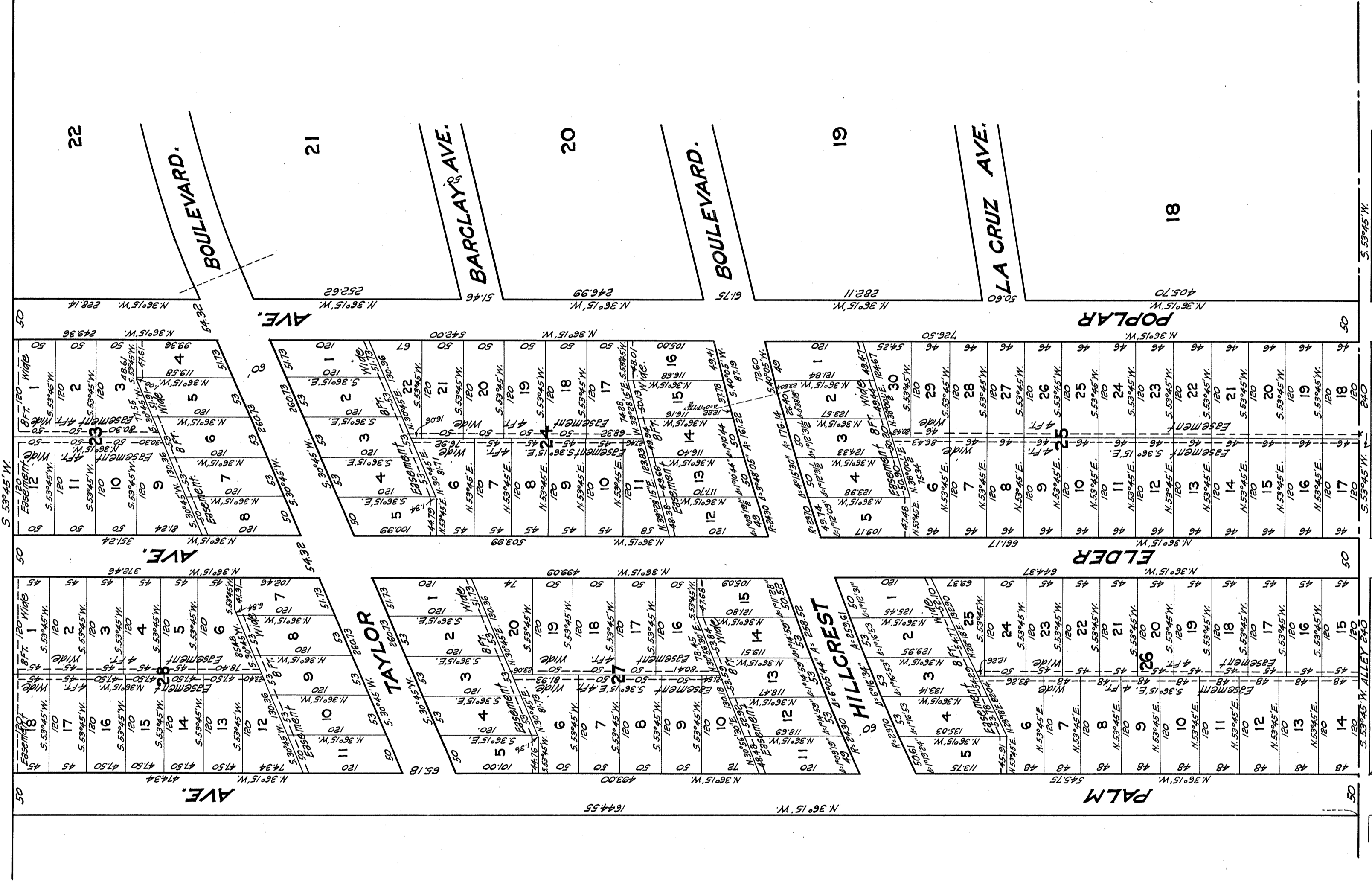
**MAP OF  
SUBDIVISION No. 1.  
MILLBRAE HIGHLANDS  
MILLBRAE  
SAN MATEO COUNTY  
CALIFORNIA**

SCALE 0 100 200 300 400 FT.

Wm B. Hoag, Engineer & Surveyor  
March, 1927.



SPRING VALLEY WATER CO.



PALM AVE.  
ELDER AVE.  
POPLAR AVE.  
MILLBRAE VILLAGE TRACT

**MAP OF  
SUBDIVISION NO. 1.  
MILLBRAE HIGHLANDS  
MILLBRAE  
SAN MATEO COUNTY  
CALIFORNIA**

NOTE -- Indicates "1" x 18" Iron Pin  
Monuments set 2 feet from  
property lines measured at  
right angles or radial thereto.

SCALE 0 100 200 300 400 FT.

Wm B. Hoag, Engineer & Surveyor.  
Jan. 1927.



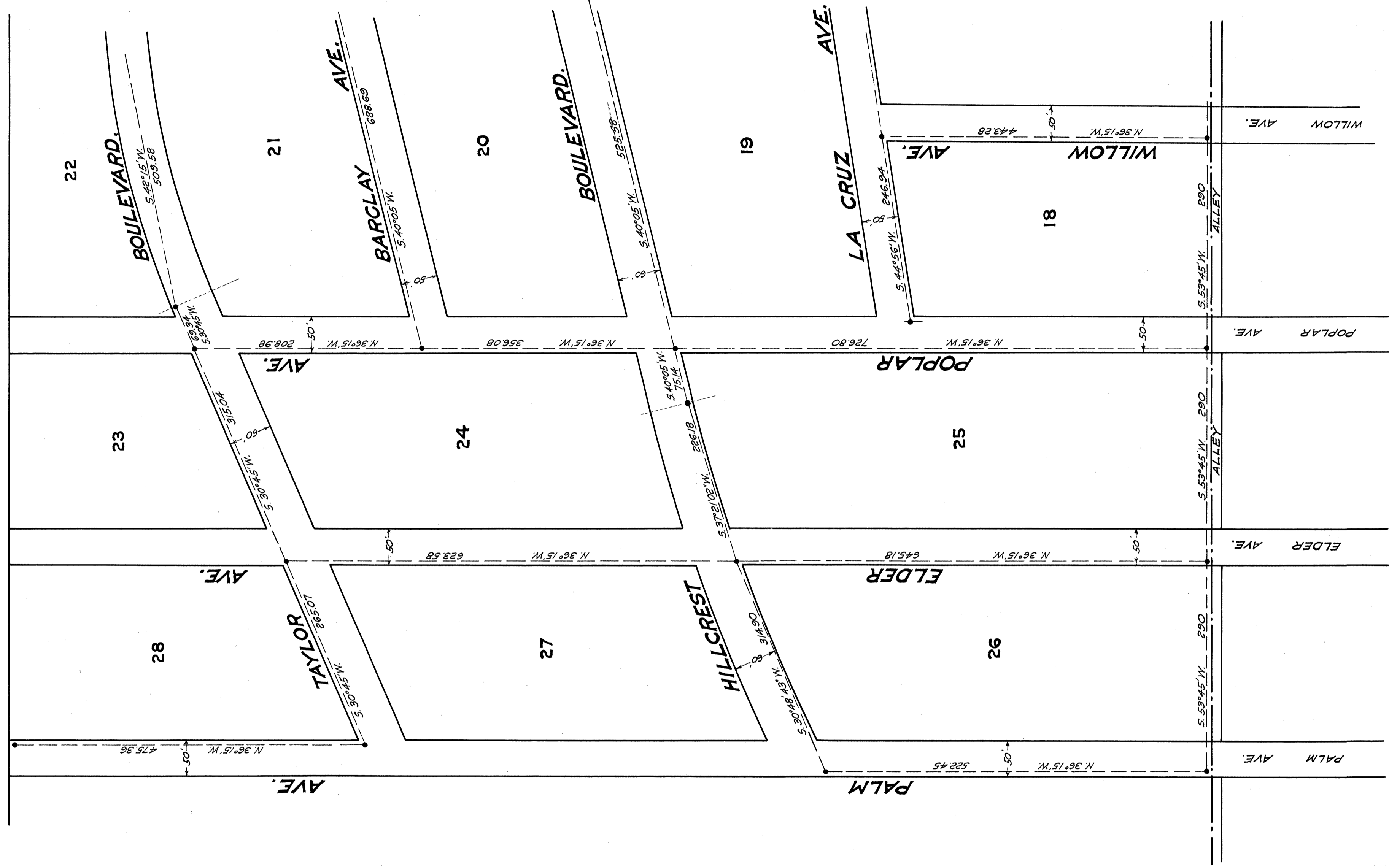
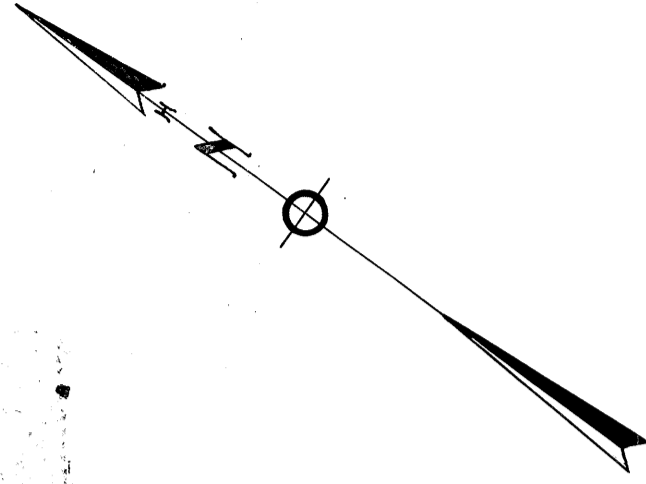
See Sheet No 4.

**MAP OF  
SUBDIVISION NO. 1.  
MILLBRAE HIGHLANDS  
MILLBRAE  
SAN MATEO COUNTY  
CALIFORNIA**

NOTE: •—•—•— Indicates 1" x 18" Iron Pin  
Monuments set 2 feet from  
property lines, measured at  
right angles or radial thereto.

SCALE  
0 100 200 300 400 FT.

Wm B. Hoag, Engineer & Surveyor.  
Jan. 1927.



See Sheet No 3.