

# CAPUCHINO GOLF CORPORATION

## SUBDIVISION No. 1

### SAN MATEO COUNTY, CALIF.

# 24

**Know All Men By These Presents:-**

That the Capuchino Land Co., a California Corporation, as sole owner of the tract of land delineated hereon, here-by causes and consents to the making and filing of the within map. That the land delineated hereon as Capuchino Drive, Hacienda Drive, Palmito Drive, Park Boulevard, Park Place, Private Way, all alleys and the area designated "Area A" is intended and is hereby offered for dedication to public use.

In Witness Whereof, said corporation has caused these presents to be duly executed this 21<sup>st</sup> day of September, 1926, by its president and secretary and its corporate seal to be hereunto affixed.

CAPUCHINO LAND CO.

by Templeton Crocker President  
by W. F. Lewis Secretary

STATE OF CALIFORNIA  
CITY AND COUNTY OF SAN FRANCISCO } s.s.  
On this 21<sup>st</sup> day of September, 1926, before me, Minnie Collins, a Notary Public in and for the City and County of San Francisco, State of California, residing therein, duly commissioned and sworn, personally appeared Templeton Crocker and W. F. Lewis, known to me to be the persons whose names are subscribed to the within instrument as president and secretary of the Capuchino Land Co., and they acknowledged to me that they executed the same on behalf of said corporation.

In Witness Whereof, I have hereunto set my hand and affixed my official seal the day and year in this certificate first above written.

Minnie Collins  
Notary Public in and for the  
City and County of San Francisco, State  
of California.

STATE OF CALIFORNIA  
CITY AND COUNTY OF SAN FRANCISCO } s.s.  
Templeton Crocker, being duly sworn, deposes and says:-  
"I am the president of the Capuchino Land Co., and make this affidavit of and as my own free will and act; That said corporation has caused and consented to the making and filing of the within map, and is the only party whose consent is necessary to said making and filing."

Subscribed and sworn to before me  
this 21<sup>st</sup> day of September, 1926.  
Minnie Collins  
Notary Public in and for the City and County  
of San Francisco, State of California.

I, L. Keith, Civil Engineer, do hereby certify that the within map was made from a full, true and correct survey made by me on the ground, of the lands embraced hereon, that monuments as shown are as located and appearing on the ground, and that this map shows the exact location of said tract, in reference to adjacent lands.

L. Keith  
Civil Engineer.

I, J.J. Shields, County Auditor of the County of San Mateo, State of California, hereby certify that there are no liens for unpaid State, County, or other taxes, except taxes not yet payable, upon the tract of land, or any part thereof, as shown on this map. Dated this 20<sup>th</sup> day of September, 1926.

J.J. Shields  
County Auditor.

We, Geo. A. Kneese, County Surveyor, and D.P. Flynn, County Assessor of San Mateo County, State of California, hereby certify that we have examined each and every lot as shown on the within map as to its value for residential or commercial purposes and we hereby recommend approval of said map.

Geo. A. Kneese  
County Surveyor  
D. P. Flynn  
County Assessor

The City Planning Commission of the City of San Bruno, by resolution adopted at a special meeting held on the 26<sup>th</sup> day of August, 1926, duly approved the within and accompanying map.

City Planning Commission  
City of San Bruno.  
W. N. Holliman  
Secy.

I, Elizabeth M. Kneese, County Clerk and exofficio clerk of the Board of Supervisors of the County of San Mateo, State of California, hereby certify that said Board, by resolution passed at their regular meeting held on the 20<sup>th</sup> day of September, 1926, duly approved the within map of Capuchino Golf Corporation Subdivision No. 1 and accepted the streets, alleys, thoroughfares and the area designated "Area A," on behalf of the public, as same are shown hereon and offered for dedication to public use. I further certify that a bond in the sum of \$ 300.00, fixed and approved by said Board, for the payment of taxes, a lien but not yet payable, on the tract of land embraced by the within map, and to inure to the benefit of said San Mateo County, has been properly filed with said Board.

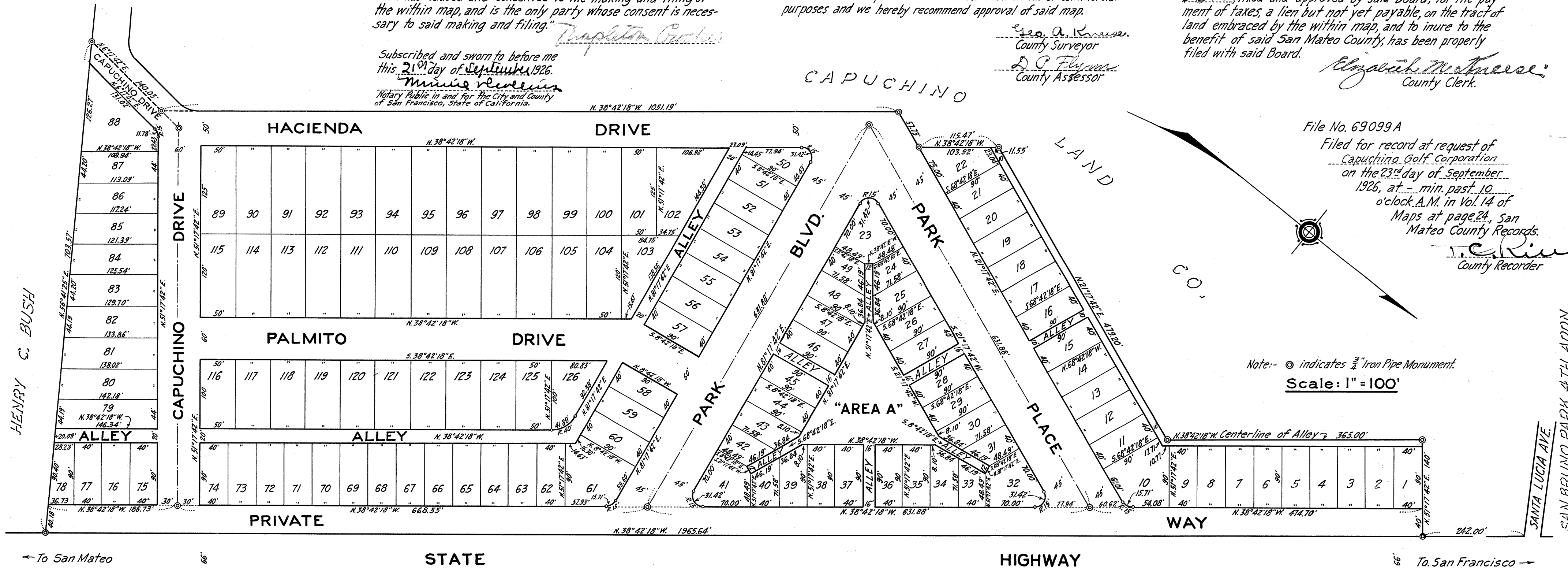
Elizabeth M. Kneese  
County Clerk.

File No. 69099A

Filed for record at request of  
Capuchino Golf Corporation  
on the 23<sup>rd</sup> day of September,  
1926, at 10 min. past 10  
o'clock A.M. in Vol. 14 of  
Maps at page 24, San  
Mateo County Records.

J. C. Rin  
County Recorder

Note:-  $\odot$  indicates  $\frac{3}{4}$ " Iron Pipe Monument.  
Scale: 1" = 100'



← To San Mateo

STATE

HIGHWAY

To San Francisco →